

# OPTIC I Bath Vanity

52111 / 52112 / 52114 / 52115 / 52116 / 52117

- Available in Polished Chrome or Satin Nickel
- Opal white glass
- 3000K Color Temperature
- CRI 90+
- 120-277V Input Driver
- Dimmable at 120V with ELV dimmer

Job Name : \_\_\_\_\_  
 Job Type : \_\_\_\_\_  
 Quantity : \_\_\_\_\_  
 Comments : \_\_\_\_\_



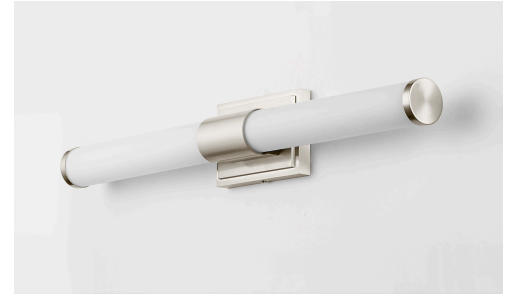
Polish Chrome



Polish Chrome

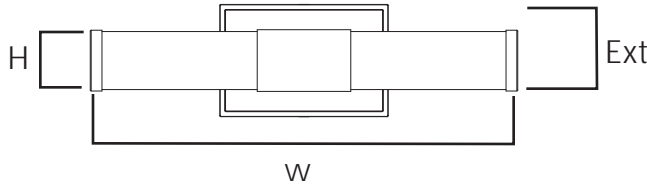


Satin Nickel



## PRODUCT DESCRIPTION

Cylinders of White cased glass are mounted onto a cast aluminum frame of Satin Nickel or Polished Chrome. LED modules evenly illuminate and provide soft yet ample illumination. Multi volt input is standard which allows for installation into commercial applications.



## FINISHES OPTIONS:

- Polished Chrome (PC)
- Satin Nickel (SN)

## GLASS

White WT

## MATERIAL:

Aluminum, Acrylic

## AVAILABLE SIZES:

10" | 14" | 18" | 24" | 30" | 36"

## RATINGS:

cETLus  
 Damp Location  
 Energy Star  
 Title 24  
 JA8 Listed  
 ADA



## ADDITIONAL:

INSTALL UP/DOWN: Both  
 RATED LIFE 50000 Hours OPERATING  
 TEMPERATURE:  
 -20°C (-4°F), 40°C (104°F)

PHOTOMETRIC: Report Found Online

MODEL	DIMENSION	BULB TYPE	CRI	LUMENS INIT DEL	COL TEMP.	DIMMABLE	INPUT
52111	4.75" W x 10.5" H x 3.5" Ext.	8W LED PCB Integrated	90	760 580	3000K	ELV at 120V	120-277V
52112	14" W x 4.75" H x 3.5" Ext.	8W LED PCB Integrated	90	760 590	3000K	ELV at 120V	120-277V
52114	18" W x 4.75" H x 3.5" Ext.	12W LED PCB Integrated	90	1140 880	3000K	ELV at 120V	120-277V
52115	24" W x 4.75" H x 3.5" Ext.	16W LED PCB Integrated	90	1520 1250	3000K	ELV at 120V	120-277V
52116	30" W x 4.75" H x 3.5" Ext.	20W LED PCB Integrated	90	1900 1550	3000K	ELV at 120V	120-277V
52117	36" W x 4.75" H x 3.5" Ext.	24W LED PCB Integrated	90	2280 1850	3000K	ELV at 120V	120-277V

Always consult a qualified electrician before installing any lighting product



**WESTERN DISTRIBUTION CENTER (HEADQUARTER)**  
 253 NORTH VINELAND AVE | CITY OF INDUSTRY, CA 91746

**EASTERN DISTRIBUTION CENTER**  
 4200 SHIRLEY DR. | ATLANTA, GA 30336

P. 626.956.4200 | F. 626.956.4225 | maximlighting.com