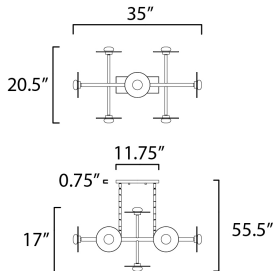




PRODUCT DESCRIPTION

Simplistic frames of Black terminate at machined fittings that support round Frost glass discs with a clear reveal on the outside edge. Satin White glass diffusers conceal LED boards which provide ample light with excellent color rendition.



MEASUREMENTS

- DIMENSION : 20.5" L x 35" W x 17.5" H x 21" Ext
- MAX OAH : 55.75" OAH
- CANOPY : 4.5" W x 1.5" H x 11.75" L
- HANGING WEIGHT : 13.36 lb

LAMPING

- INPUT VOLTAGE : 120V
- LUMENS : 3,040 Rated (2,370 Del.)
- BULB : 8 x 4W LED PCB Integrated , 32W Total
- BULB INCLUDED : (Integrated)
- DIMMABLE : Triac CL or ELV
- CRI : 90 CRI
- COLOR_TEMP : 3000K

FINISHES OPTION

- Black (BK)

GLASS

Frosted and Satin White FTSW

MATERIAL

Steel, Glass

RATINGS

cETLus
Dry Location



ADDITIONAL

ADJUSTABLE
SLOPE: 90
RATED LIFE 35000 Hours
OPERATING TEMPERATURE:
-20°C (-4°F), 40°C (104°F)

Always consult a qualified electrician before installing any lighting product.



WESTERN DISTRIBUTION CENTER (HEADQUARTER)
253 NORTH VINELAND AVE | CITY OF INDUSTRY, CA 91746

EASTERN DISTRIBUTION CENTER
101 GARDNER PARK | PEACHTREE CITY, GA 30269

P. 626.956.4200 | F. 626.956.4225 | maximlighting.com