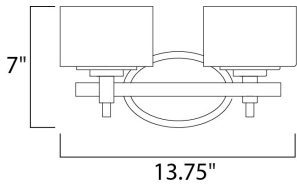




**PRODUCT DESCRIPTION**

The soft round curves of this design are evident in every detail. The use of xenon allows for a profile that is delicate in scale. The Lola collection is available in Polished Nickel finish with Satin White glass or Oil Rubbed Bronze finish with Dusty White glass.

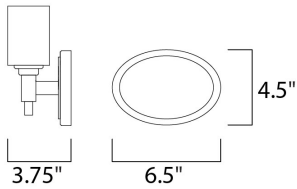


**MEASUREMENTS**

DIMENSION : 13.75" W x 7" H x 3.75" Ext  
 BACK PLATE : 6.54" W x 4.5" H x 5" HCO  
 HANGING WEIGHT : 3.75 lb

**LAMPING**

LUMENS : 1,600 Rated  
 BULB : 2 x 40W Xenon G9 , 80W Total  
 BULB INCLUDED : (Included)  
 DIMMABLE : Yes  
 COLOR\_TEMP : 2900K



**FINISHES OPTION**

-  Oil Rubbed Bronze
-  Polished Nickel

**GLASS**

Dusty White DW

**MATERIAL**

Steel + Glass

**RATINGS**

cETLus  
 Damp Location  
 ADA



**ADDITIONAL**

RATED LIFE 2000 Hours  
 OPERATING TEMPERATURE:  
 -20°C (-4°F), 40°C (104°F)

Always consult a qualified electrician before installing any lighting product.



**WESTERN DISTRIBUTION CENTER (HEADQUARTER)**  
 253 NORTH VINELAND AVE | CITY OF INDUSTRY, CA 91746  
**EASTERN DISTRIBUTION CENTER**  
 4200 SHIRLEY DR. | ATLANTA, GA 30336  
 P. 626.956.4200 | F. 626.956.4225 | maximlighting.com