



IESNA  
SUSTAINING  
MEMBER

<b>Test Report Number:</b>	LCZP19100017	 <p>Total Page:11 Version:1.0</p>			
<b>Applicant Name:</b>	Zhongshan Bonfire Lighting Company Limited				
<b>Applicant Address:</b>	NO.6 West Dong'an Rd, Haizhou Guzhen, Zhongshan, Guangdong, China				
<b>Test item:</b>	Lightray LED Outdoor Wall Sconce				
<b>Model / Type Reference:</b>	86152				
<b>Date of Issue:</b>	2019-10-14				
<b>Testing Laboratory:</b>	<b>LCTECH Guangdong Testing Services Co., Ltd.</b> 2/F., Building II, Technology and Enterprise Development Center, Guangyuan Road, Xiaolan, Zhongshan, Guangdong, China Tel:+86-760-22833366 Fax:+86-760-22833399 E-mail:Service@lccert.com <a href="http://www.lccert.com">http://www.lccert.com</a>				
<b>Test Sites:</b>	1/F., Building I, Technology and Enterprise Development Center, Guangyuan Road, Xiaolan, Zhongshan, Guangdong, China				
<b>Test Specification:</b>	Photometric test (According to IES LM-79-08)				
<b>Report Template No.:</b>	LC-RT-PL-006 Rev.1.3				
<b>Test Result:</b>	See the following pages				
<b>Compiled by:</b>	<b>Reviewed by:</b>				
2019-10-14	Kargel Yuan		2019-10-14	Lin Qiu	
Date	Name	Signature	Date	Name	Signature
<b>Remark:</b> N/A					
The duplication of this report or parts of it and its use for advertising purposes is only allowed with permission of the testing laboratory. This report contains the result of the examination of the product sample submitted by the applicant. A general statement concerning the quality of the products from the series manufacture cannot be derived therefore. This report must not be used by the customer to claim product certification, approval or endorsement by NVLAP, NIST, or any agency of the Federal Government.					



### Sample Description

Luminaire Type	Lightray LED Outdoor Wall Sconce	Model/Type	86152
Input Type	<input checked="" type="checkbox"/> AC <input type="checkbox"/> DC	Rated Voltage	120VAC,60Hz
Rated Wattage	6 W	Lamp Rated Flux	N/A
Lamp Type	LED	Lamp Model	N/A
Power Supply Type	LED driver	Power Supply Model	Not Provided
Luminous Length	170 mm	Luminous Width	70 mm
Luminous Diameter	N/A	Luminous Height	0 mm
Sample Code of lab.	191010103001		

### Test Condition

Temperature	25.0°C	Humidity	65%
Test Equipment	LC-I-902 GMS-2000	Test Mode	C-Gamma
Test Date	2019-10-11	Test Method	Absolutely photometric
Azimuth (C)	15	Elevation (Gamma)	5
Test distance	30.00 m	Uncertainty	Considered
Stabilization	2 hours		

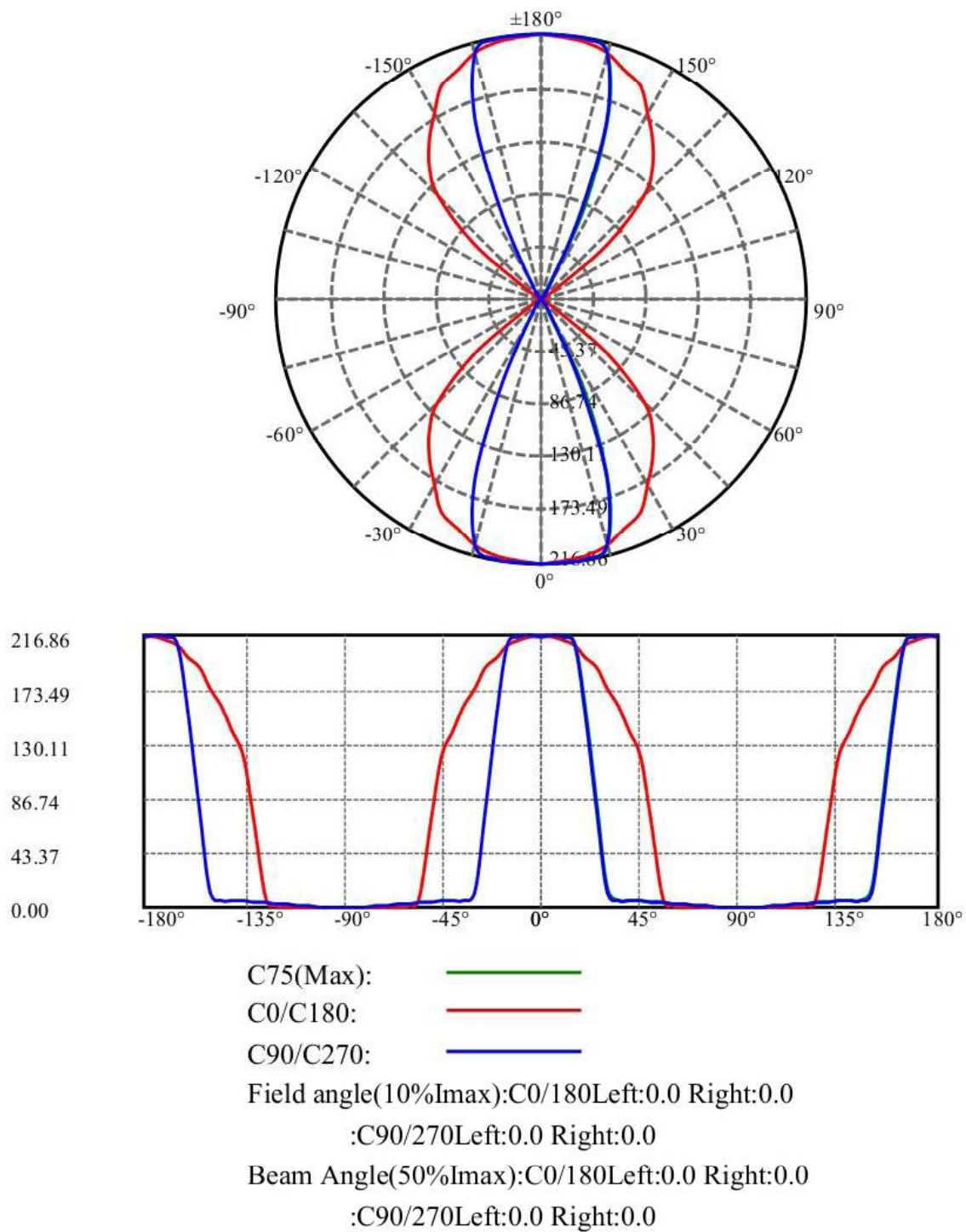
### Characteristics

Input Voltage	119.99 V	Input Current	0.117 A
Wattage	13.13 W	Power Factor	0.936
Total lumens	414.01 lm	Luminous Efficacy	31.53 lm/W
Luminaire Efficiency	100%	Central Intensity	216.179 cd
Max intensity	216.857 cd	Angle of max intensity	C=75.0, Gamma=5.0
Maximum S/H	C0_180= 1.20,C90_270= 0.79	CIE Type	General Diffuse lighting

### Luminance Data (cd/m<sup>2</sup>)

Gamma	45	50	55	60	65	70	75	80	85
C0	15731	10084	1239	167	0	0	0	0	0
C45	534	588	512	420	298	246	243	0	0
C90	713	653	586	504	497	368	324	242	0

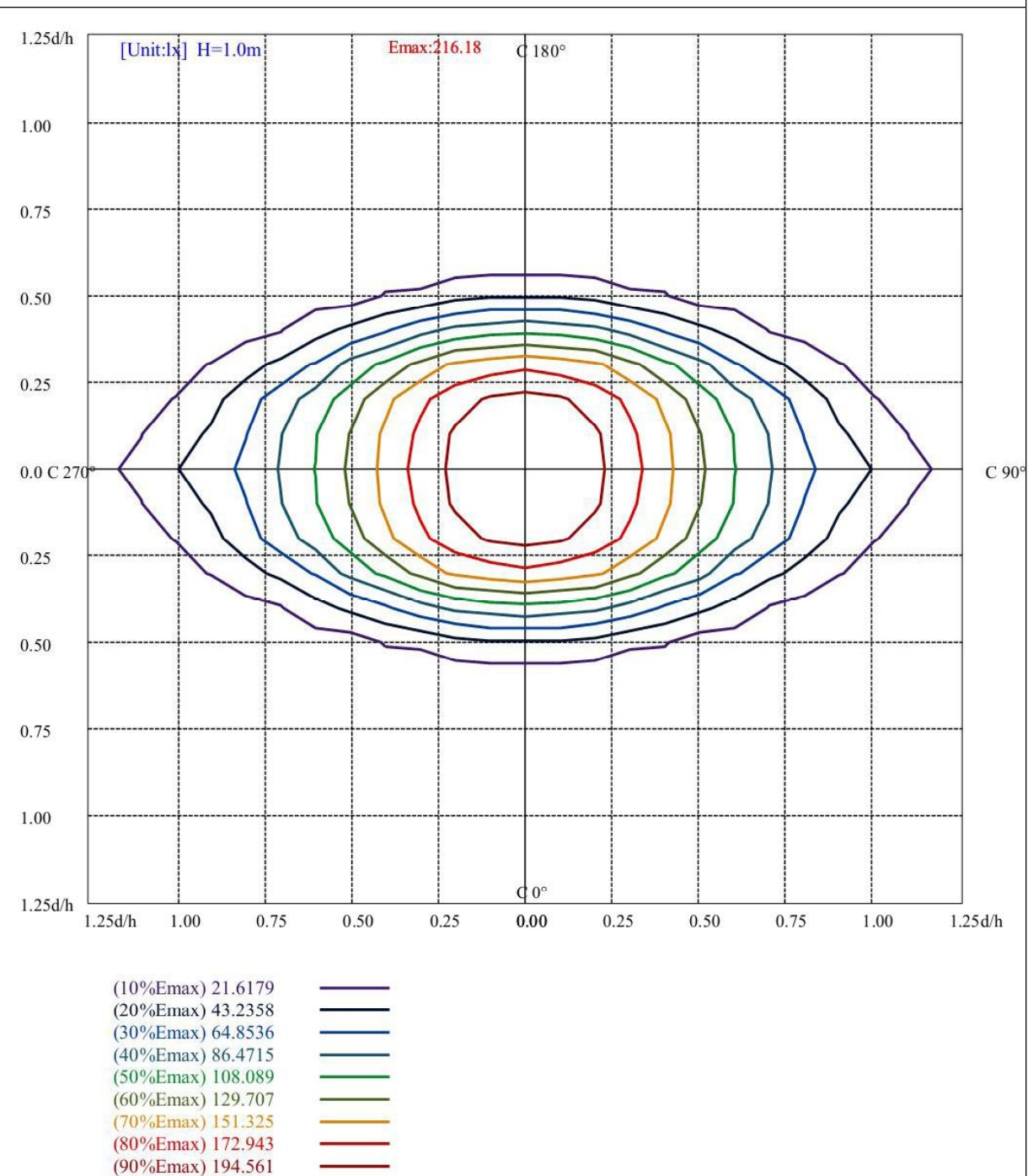
**Light Distribution Curve(cd)**



**Zonal flux distribution table**

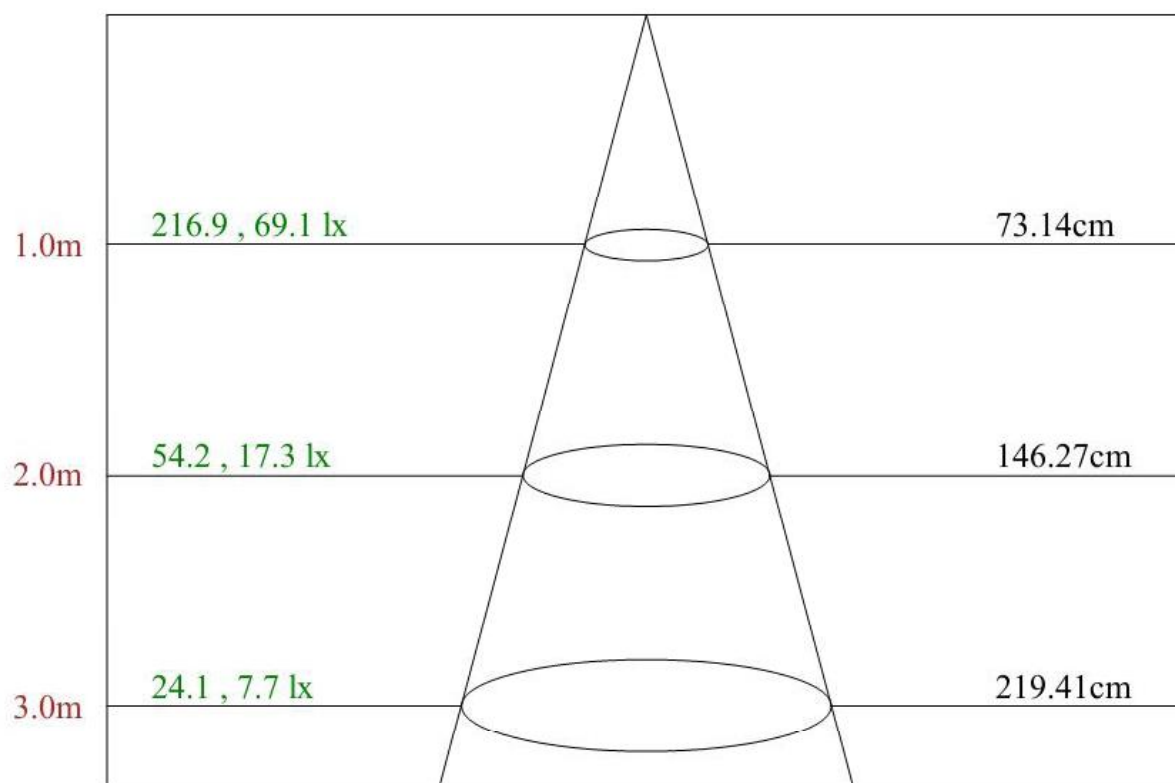
$\gamma(^{\circ})$	Average I(cd)	Zonal F(lm)	Sum F(lm)	Eff Flux(%)	Eff Sum(%)
0.0	216.179	.000	.000	.000%	.000%
5.0	215.881	5.165	5.165	1.248%	1.248%
10.0	215.018	15.415	20.580	3.723%	4.971%
15.0	209.617	25.189	45.769	6.084%	11.055%
20.0	187.472	32.726	78.494	7.905%	18.960%
25.0	144.691	34.838	113.332	8.415%	27.374%
30.0	93.812	30.183	143.515	7.290%	34.665%
35.0	60.841	22.774	166.289	5.501%	40.165%
40.0	38.534	16.580	182.869	4.005%	44.170%
45.0	22.570	11.314	194.183	2.733%	46.903%
50.0	10.069	6.595	200.778	1.593%	48.496%
55.0	3.225	2.890	203.668	.698%	49.194%
60.0	1.989	1.205	204.873	.291%	49.485%
65.0	1.389	.821	205.694	.198%	49.683%
70.0	.976	.599	206.293	.145%	49.828%
75.0	.638	.422	206.715	.102%	49.930%
80.0	.225	.231	206.946	.056%	49.986%
85.0	.000	.061	207.007	.015%	50.000%
90.0	.000	.000	207.007	.000%	50.000%
95.0	.000	.000	207.007	.000%	50.000%
100.0	.225	.061	207.068	.015%	50.015%
105.0	.638	.231	207.299	.056%	50.071%
110.0	.976	.422	207.721	.102%	50.173%
115.0	1.389	.599	208.319	.145%	50.317%
120.0	1.989	.821	209.140	.198%	50.516%
125.0	3.225	1.205	210.345	.291%	50.807%
130.0	10.070	2.891	213.236	.698%	51.505%
135.0	22.572	6.596	219.832	1.593%	53.098%
140.0	38.528	11.313	231.145	2.733%	55.831%
145.0	60.839	16.579	247.723	4.004%	59.835%
150.0	93.813	22.773	270.497	5.501%	65.336%
155.0	144.689	30.183	300.680	7.290%	72.626%
160.0	187.473	34.838	335.517	8.415%	81.041%
165.0	209.617	32.726	368.243	7.905%	88.945%
170.0	215.019	25.189	393.432	6.084%	95.030%
175.0	215.880	15.415	408.847	3.723%	98.753%
180.0	216.181	5.165	414.012	1.248%	100.000%

### ISO illuminance diagram(Lux)





### Lux distance Curve



Max , Ave

Beam angle of C75plane396.18



### Utilization factor table

RHOCC	80			70			50			30			10			0
RHOW	50	30	10	50	30	10	50	30	10	50	30	10	50	30	10	0
RCR	COEFFICIENTS OF UTILIZATION RHOFC=20 CU															
0	1.07	1.07	1.07	0.99	0.99	0.99	0.83	0.83	0.83	0.69	0.69	0.69	0.56	0.56	0.56	0.50
1	0.97	0.93	0.91	0.90	0.87	0.85	0.76	0.75	0.73	0.64	0.63	0.62	0.53	0.52	0.52	0.47
2	0.87	0.82	0.78	0.81	0.77	0.74	0.70	0.67	0.65	0.59	0.58	0.56	0.50	0.49	0.48	0.43
3	0.79	0.73	0.69	0.74	0.69	0.65	0.64	0.61	0.58	0.55	0.53	0.51	0.47	0.45	0.44	0.40
4	0.72	0.66	0.61	0.68	0.62	0.58	0.59	0.55	0.52	0.51	0.48	0.46	0.44	0.42	0.40	0.37
5	0.66	0.59	0.55	0.62	0.56	0.52	0.55	0.50	0.47	0.48	0.45	0.42	0.41	0.39	0.37	0.34
6	0.61	0.54	0.49	0.57	0.51	0.47	0.51	0.46	0.43	0.45	0.41	0.39	0.39	0.36	0.35	0.32
7	0.56	0.49	0.45	0.53	0.47	0.43	0.47	0.43	0.39	0.42	0.38	0.36	0.37	0.34	0.32	0.30
8	0.52	0.45	0.41	0.49	0.43	0.39	0.44	0.39	0.36	0.39	0.36	0.33	0.34	0.32	0.30	0.28
9	0.48	0.42	0.38	0.46	0.40	0.36	0.41	0.37	0.34	0.37	0.33	0.31	0.33	0.30	0.28	0.26
10	0.45	0.39	0.35	0.43	0.37	0.34	0.39	0.34	0.31	0.35	0.31	0.29	0.31	0.28	0.27	0.25

Intensity data(cd)

C/γ(°)	0.0	5.0	10.0	15.0	20.0	25.0	30.0	35.0	40.0
0.0	216.18	215.28	213.49	209.00	199.58	191.51	174.92	159.67	140.83
15.0	216.18	215.28	214.38	209.21	200.67	190.56	175.95	159.10	115.06
30.0	216.18	215.51	214.83	210.10	201.77	190.07	152.45	89.64	27.71
45.0	216.18	215.95	215.50	209.87	200.64	156.05	86.25	21.39	4.73
60.0	216.18	215.73	215.06	209.89	182.24	113.93	36.63	6.29	5.17
75.0	216.18	216.86	215.73	209.63	161.79	83.72	17.60	5.87	5.42
90.0	216.18	216.63	215.73	208.97	155.83	76.11	13.06	5.85	5.40
105.0	216.18	216.86	215.73	209.63	161.79	83.72	17.60	5.87	5.42
120.0	216.18	215.73	215.06	209.89	182.24	113.93	36.63	6.29	5.17
135.0	216.18	215.95	215.50	209.87	200.64	156.05	86.25	21.39	4.73
150.0	216.18	215.51	214.83	210.10	201.77	190.07	152.45	89.64	27.71
165.0	216.18	215.28	214.38	209.21	200.67	190.56	175.95	159.10	115.06
180.0	216.18	215.28	213.49	209.00	199.58	191.51	174.92	159.67	140.83
195.0	216.18	215.28	214.38	209.21	200.67	190.56	175.95	159.10	115.06
210.0	216.18	215.51	214.83	210.10	201.77	190.07	152.45	89.64	27.71
225.0	216.18	215.95	215.50	209.87	200.64	156.05	86.25	21.39	4.73
240.0	216.18	215.73	215.06	209.89	182.24	113.93	36.63	6.29	5.17
255.0	216.18	216.86	215.73	209.63	161.79	83.72	17.60	5.87	5.42
270.0	216.18	216.63	215.73	208.97	155.83	76.11	13.06	5.85	5.40
285.0	216.18	216.86	215.73	209.63	161.79	83.72	17.60	5.87	5.42
300.0	216.18	215.73	215.06	209.89	182.24	113.93	36.63	6.29	5.17
315.0	216.18	215.95	215.50	209.87	200.64	156.05	86.25	21.39	4.73
330.0	216.18	215.51	214.83	210.10	201.77	190.07	152.45	89.64	27.71
345.0	216.18	215.28	214.38	209.21	200.67	190.56	175.95	159.10	115.06
360.0	216.18	215.28	213.49	209.00	199.58	191.51	174.92	159.67	140.83
C/γ(°)	45.0	50.0	55.0	60.0	65.0	70.0	75.0	80.0	85.0
0.0	119.30	69.52	7.62	0.90	0.00	0.00	0.00	0.00	0.00
15.0	55.27	7.64	1.12	0.90	0.90	0.90	0.00	0.00	0.00
30.0	3.83	2.93	2.25	1.80	1.35	0.90	0.90	0.23	0.00
45.0	4.05	4.05	3.15	2.25	1.35	0.90	0.68	0.00	0.00
60.0	4.49	4.27	3.60	2.47	1.35	1.12	0.90	0.45	0.00
75.0	5.42	4.51	3.61	2.71	2.26	1.35	0.90	0.45	0.00
90.0	5.40	4.50	3.60	2.70	2.25	1.35	0.90	0.45	0.00
105.0	5.42	4.51	3.61	2.71	2.26	1.35	0.90	0.45	0.00
120.0	4.49	4.27	3.60	2.47	1.35	1.12	0.90	0.45	0.00
135.0	4.05	4.05	3.15	2.25	1.35	0.90	0.68	0.00	0.00
150.0	3.83	2.93	2.25	1.80	1.35	0.90	0.90	0.23	0.00
165.0	55.27	7.64	1.12	0.90	0.90	0.90	0.00	0.00	0.00
180.0	119.30	69.52	7.62	0.90	0.00	0.00	0.00	0.00	0.00
195.0	55.27	7.64	1.12	0.90	0.90	0.90	0.00	0.00	0.00
210.0	3.83	2.93	2.25	1.80	1.35	0.90	0.90	0.23	0.00
225.0	4.05	4.05	3.15	2.25	1.35	0.90	0.68	0.00	0.00
240.0	4.49	4.27	3.60	2.47	1.35	1.12	0.90	0.45	0.00
255.0	5.42	4.51	3.61	2.71	2.26	1.35	0.90	0.45	0.00
270.0	5.40	4.50	3.60	2.70	2.25	1.35	0.90	0.45	0.00
285.0	5.42	4.51	3.61	2.71	2.26	1.35	0.90	0.45	0.00
300.0	4.49	4.27	3.60	2.47	1.35	1.12	0.90	0.45	0.00
315.0	4.05	4.05	3.15	2.25	1.35	0.90	0.68	0.00	0.00
330.0	3.83	2.93	2.25	1.80	1.35	0.90	0.90	0.23	0.00
345.0	55.27	7.64	1.12	0.90	0.90	0.90	0.00	0.00	0.00
360.0	119.30	69.52	7.62	0.90	0.00	0.00	0.00	0.00	0.00



Intensity data(cd)

C/γ(°)	90.0	95.0	100.0	105.0	110.0	115.0	120.0	125.0	130.0
0.0	0.00	0.00	0.00	0.00	0.00	0.00	0.90	7.62	69.52
15.0	0.00	0.00	0.00	0.00	0.90	0.90	0.90	1.12	7.64
30.0	0.00	0.00	0.22	0.90	0.90	1.35	1.80	2.25	2.93
45.0	0.00	0.00	0.00	0.68	0.90	1.35	2.25	3.15	4.05
60.0	0.00	0.00	0.45	0.90	1.12	1.35	2.47	3.60	4.27
75.0	0.00	0.00	0.45	0.90	1.35	2.26	2.71	3.61	4.51
90.0	0.00	0.00	0.45	0.90	1.35	2.25	2.70	3.60	4.50
105.0	0.00	0.00	0.45	0.90	1.35	2.26	2.71	3.61	4.51
120.0	0.00	0.00	0.45	0.90	1.12	1.35	2.47	3.60	4.27
135.0	0.00	0.00	0.00	0.68	0.90	1.35	2.25	3.15	4.05
150.0	0.00	0.00	0.22	0.90	0.90	1.35	1.80	2.25	2.93
165.0	0.00	0.00	0.00	0.00	0.90	0.90	0.90	1.12	7.64
180.0	0.00	0.00	0.00	0.00	0.00	0.00	0.90	7.62	69.52
195.0	0.00	0.00	0.00	0.00	0.90	0.90	0.90	1.12	7.64
210.0	0.00	0.00	0.22	0.90	0.90	1.35	1.80	2.25	2.93
225.0	0.00	0.00	0.00	0.68	0.90	1.35	2.25	3.15	4.05
240.0	0.00	0.00	0.45	0.90	1.12	1.35	2.47	3.60	4.27
255.0	0.00	0.00	0.45	0.90	1.35	2.26	2.71	3.61	4.51
270.0	0.00	0.00	0.45	0.90	1.35	2.25	2.70	3.60	4.50
285.0	0.00	0.00	0.45	0.90	1.35	2.26	2.71	3.61	4.51
300.0	0.00	0.00	0.45	0.90	1.12	1.35	2.47	3.60	4.27
315.0	0.00	0.00	0.00	0.68	0.90	1.35	2.25	3.15	4.05
330.0	0.00	0.00	0.22	0.90	0.90	1.35	1.80	2.25	2.93
345.0	0.00	0.00	0.00	0.00	0.90	0.90	0.90	1.12	7.64
360.0	0.00	0.00	0.00	0.00	0.00	0.00	0.90	7.62	69.52

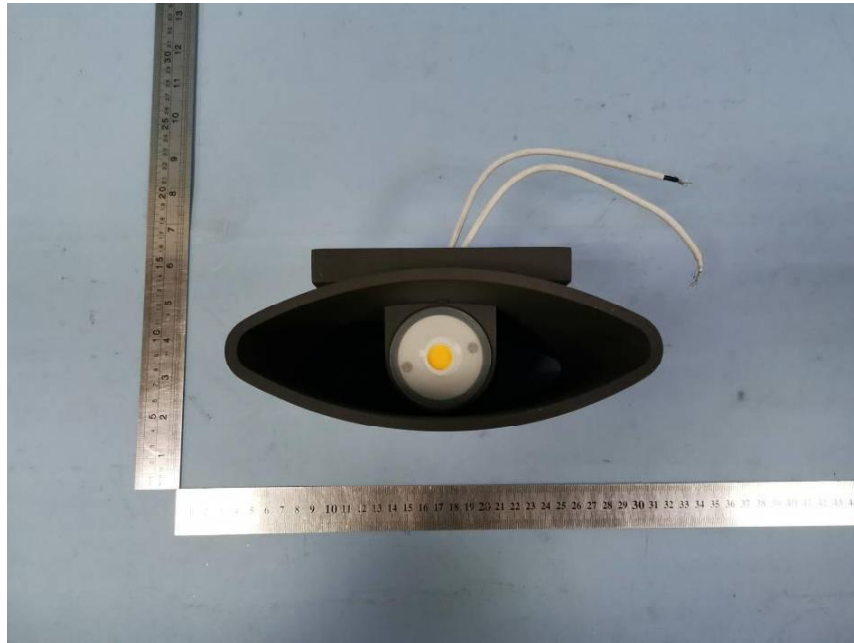
  

C/γ(°)	135.0	140.0	145.0	150.0	155.0	160.0	165.0	170.0	175.0
0.0	119.30	140.83	159.67	174.92	191.51	199.58	209.00	213.49	215.28
15.0	55.29	115.05	159.10	175.96	190.57	200.67	209.21	214.38	215.28
30.0	3.83	27.69	89.62	152.46	190.05	201.77	210.10	214.84	215.50
45.0	4.05	4.73	21.39	86.25	156.05	200.64	209.87	215.50	215.95
60.0	4.49	5.17	6.29	36.63	113.93	182.25	209.89	215.06	215.73
75.0	5.42	5.42	5.87	17.60	83.72	161.80	209.64	215.73	216.86
90.0	5.40	5.40	5.85	13.06	76.11	155.83	208.97	215.73	216.63
105.0	5.42	5.42	5.87	17.60	83.72	161.80	209.64	215.73	216.86
120.0	4.49	5.17	6.29	36.63	113.93	182.25	209.89	215.06	215.73
135.0	4.05	4.73	21.39	86.25	156.05	200.64	209.87	215.50	215.95
150.0	3.83	27.69	89.62	152.46	190.05	201.77	210.10	214.84	215.50
165.0	55.29	115.05	159.10	175.96	190.57	200.67	209.21	214.38	215.28
180.0	119.30	140.83	159.67	174.92	191.51	199.58	209.00	213.49	215.28
195.0	55.29	115.05	159.10	175.96	190.57	200.67	209.21	214.38	215.28
210.0	3.83	27.69	89.62	152.46	190.05	201.77	210.10	214.84	215.50
225.0	4.05	4.73	21.39	86.25	156.05	200.64	209.87	215.50	215.95
240.0	4.49	5.17	6.29	36.63	113.93	182.25	209.89	215.06	215.73
255.0	5.42	5.42	5.87	17.60	83.72	161.80	209.64	215.73	216.86
270.0	5.40	5.40	5.85	13.06	76.11	155.83	208.97	215.73	216.63
285.0	5.42	5.42	5.87	17.60	83.72	161.80	209.64	215.73	216.86
300.0	4.49	5.17	6.29	36.63	113.93	182.25	209.89	215.06	215.73
315.0	4.05	4.73	21.39	86.25	156.05	200.64	209.87	215.50	215.95
330.0	3.83	27.69	89.62	152.46	190.05	201.77	210.10	214.84	215.50
345.0	55.29	115.05	159.10	175.96	190.57	200.67	209.21	214.38	215.28
360.0	119.30	140.83	159.67	174.92	191.51	199.58	209.00	213.49	215.28

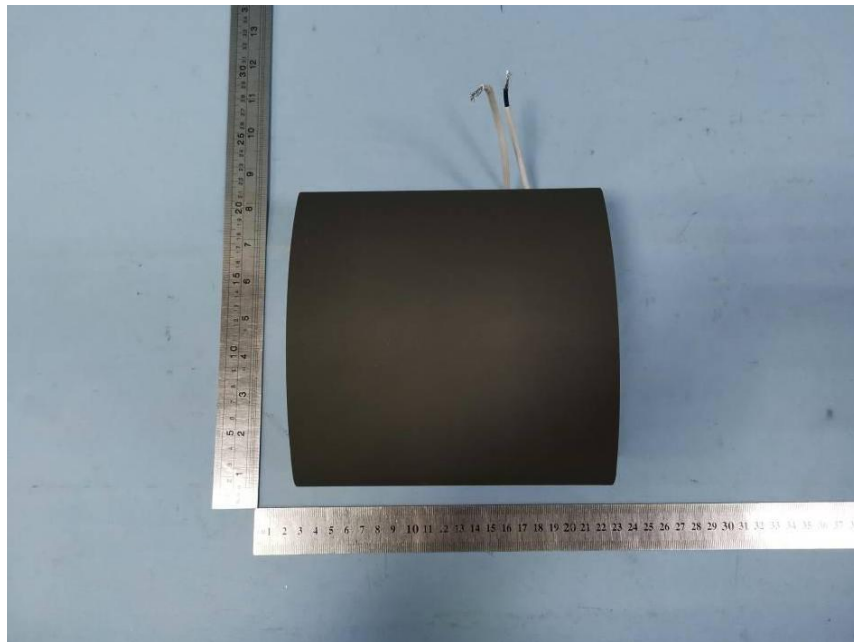
**Intensity data(cd)**

<b>C/γ(°)</b>	<b>180.0</b>
<b>0.0</b>	<b>216.18</b>
<b>15.0</b>	<b>216.18</b>
<b>30.0</b>	<b>216.19</b>
<b>45.0</b>	<b>216.18</b>
<b>60.0</b>	<b>216.18</b>
<b>75.0</b>	<b>216.18</b>
<b>90.0</b>	<b>216.18</b>
<b>105.0</b>	<b>216.18</b>
<b>120.0</b>	<b>216.18</b>
<b>135.0</b>	<b>216.18</b>
<b>150.0</b>	<b>216.19</b>
<b>165.0</b>	<b>216.18</b>
<b>180.0</b>	<b>216.18</b>
<b>195.0</b>	<b>216.18</b>
<b>210.0</b>	<b>216.19</b>
<b>225.0</b>	<b>216.18</b>
<b>240.0</b>	<b>216.18</b>
<b>255.0</b>	<b>216.18</b>
<b>270.0</b>	<b>216.18</b>
<b>285.0</b>	<b>216.18</b>
<b>300.0</b>	<b>216.18</b>
<b>315.0</b>	<b>216.18</b>
<b>330.0</b>	<b>216.19</b>
<b>345.0</b>	<b>216.18</b>
<b>360.0</b>	<b>216.18</b>

**Appendix A Product Photo**



Picture 1



Picture 2

\*\*\*\*End of test report\*\*\*\*